



*Alabama A&M and Auburn Universities*

*Rickey G. Hudson, Regional Extension Agent  
Wiregrass Research & Extension Center  
Post Office Box 217  
Headland, Alabama 36345-0217  
Telephone: 334-693-2010 Fax: 334-693-2957  
Cellular: 334-726-6814 Southern Linc: 1\*7\*130  
Email: [hudsorg@aces.edu](mailto:hudsorg@aces.edu)*

June 20, 2011

MEMO TO: Alabama Beef Cattle Improvement Association members, beef cattle producers, Extension agents and other interested persons

FROM: Rickey G. Hudson  
Regional Extension Agent – Animal Science/Forages  
Test Superintendent – Wiregrass Forage Based BCIA Bull Evaluation

SUBJECT: Wiregrass Forage Based BCIA Bull Evaluation  
2011-2012 Rules and Regulations

The 23<sup>rd</sup> Wiregrass Forage Based BCIA Bull Evaluation is scheduled for 2011-2012. The rules and regulations for the 2011-2012 Wiregrass Forage Based BCIA Bull Evaluation are enclosed. These rules and regulations will govern the evaluation. Please do not hesitate, to contact me with any questions about these rules and regulations.

Advance Genetic Resource, LLC will host the 2011-2012 Wiregrass Forage Based BCIA Bull Evaluation. The Advance Genetic Resource farm is located near Elba, Alabama in Coffee County. Max Bozeman, Jr. and Larry Reeves, Advance Genetic Resource partners, serve as the Test Managers of the 2011-2012 evaluation.

The Wiregrass Forage Based BCIA Bull Evaluation is conducted by the Alabama Beef Cattle Improvement Association (BCIA). The Alabama BCIA has approved the enclosed rules and regulations of the 2011-2012 evaluation. Membership in the Alabama BCIA is a requirement of all evaluation bull consignors. Contact Michelle Elmore, Alabama BCIA Program Director, at 205-646-0115 (office) or 205-287-1080 (cellular) for any needed membership information.

Performance pays! The evaluation of post weaning gain in bulls provides valuable data for genetic selections and provides data to aid in the calculation of Expected Progeny Differences (EPDs). Beef seed-stock producers, with an interest to document the performance of their bulls in a standardized, impartial forage based system, should contact me about participation in the 2011-2012 Wiregrass Forage Based BCIA Bull Evaluation.

Mark your calendar! The 22<sup>nd</sup> Wiregrass Forage Based BCIA Bull Evaluation Sale is October 22, 2011.



**WIREGRASS FORAGE BASED BCIA BULL EVALUATION  
2011-2012 RULES AND REGULATIONS**

**I. Mission of Evaluation**

- A. To provide a standard, impartial, forage based bull evaluation to measure post-weaning gain and to collect performance data.
- B. To serve as a source and market of performance evaluated bulls.
- C. To serve as an educational tool for the improvement of beef cattle production.

**II. General Rules & Regulations**

- A. Organization – The 2011-12 evaluation is organized and governed by these rules and regulations, set forth by the eleven (11) producer members of the Evaluation Board of Directors and approved by the Alabama Beef Cattle Improvement Association (BCIA). Items not clearly defined, nor specifically addressed in these rules and regulations, shall be reserved for resolution and decided by vote of the Evaluation Board of Directors. Their decisions shall be considered final.
- B. Test Committee – The 2011-12 evaluation is served by a Test Committee, constituted by the eleven (11) members of the Evaluation Board of Directors and the ten (10) members from the Evaluation Advisory Group (industry professionals).
- C. Test Supervision – The 2011-12 evaluation is supervised by the Alabama Beef Cattle Improvement Association and the Test Committee.
- D. Test Superintendent – The 2011-12 evaluation Superintendent is Rickey Hudson, Regional Extension Agent – Animal Science/Forages, of the Alabama Cooperative Extension System.
- E. Test Managers – The 2011-12 evaluation Managers are Max Bozeman, Jr. and Larry Reeves, partners of Advance Genetic Resource, LLC; hereafter referred to as Advance Genetic Resource.
- F. Test Site – The 2011-12 evaluation shall be conducted on the farm of Advance Genetic Resource, located south of Elba, Alabama in the county of Coffee.
- G. Test Capacity – The 2011-12 evaluation has the capacity to evaluate and develop 80 bulls. A maximum of 80 bulls will be selected for evaluation using the guidelines listed Section II – General Rules and Regulations, article J – Preferences (below).

**H. Test Periods & Dates**

- 1. Nomination Deadline: September 1, 2011
- 2. Delivery Date: November 16, 2011
- 3. Acclimation Period: November 16, 2011 – November 29, 2011
- 4. Evaluation Period: November 30, 2011 – April 25, 2012
- 5. Development Period: April 26, 2012 – October 26, 2012
- 6. Sale Date: October 27, 2012

- I. Nominations – The 2011-12 evaluation shall accept nominations from producers in Alabama and bordering states (Florida, Georgia, Mississippi & Tennessee). All consignors must have active membership (whole herd enrollment with performance data submission) in the Alabama BCIA. Bull nominations and fees shall be submitted to the Test Superintendent, no later than September 1, 2011. Nomination fees (\$200.00 per bull) are non-refundable. However, the substitution of an individual bull for a hardship situation is allowable.

- J. Preferences – The 2011-12 evaluation shall accept nominations using the following preferences:

- 1. Alabama producers, then producers from bordering states of Alabama (ordered by date received).
- 2. Contemporary groups of 4 or more bulls, then smaller contemporary groups, then bulls with no contemporaries.

## WIREGRASS FORAGE BASED BCIA BULL EVALUATION 2011-2012 RULES AND REGULATIONS

3. Bulls born on the farm of a consignor that bred and owned their dams at conception, then bulls born on the farm of a consignor that was purchased in-dam and then purchased bulls.
- K. Bull Age** – The 2011-12 evaluation shall only accept nominations of bulls born on or between the dates of October 15, 2010 and January 31, 2011.
- L. Bull Registration & Identification** – The 2011-12 evaluation shall only accept bulls that are properly registered and recorded with a recognized national breed association. Bulls must have a legible tattoo or brand (permanent identification) matching their certificate of registry (verify at home, prior to delivery). A copy of the original registration certificate for each bull shall be submitted to the Test Superintendent at delivery of bull(s).
- M. Bull Birth & Weaning Data** – The 2011-12 evaluation requires that all bulls have a recorded birth weight and weaning records compiled by a recognized, national breed association. Birth and weaning records shall include individual birth weight, adjusted 205-day weight, adjusted 205-day weight ratio and number of contemporaries. The birth and weaning records shall be submitted to the Test Superintendent at delivery of bull(s).
- N. Bull Pre-Test Growth** – The 2011-12 evaluation requires that all bulls shall weigh a minimum of 2.0 pounds per day of age (WDA) at delivery for entry into the evaluation program. A calculated 5% shrink allowance is given to compensate for loss of weight during delivery (check WDA prior to delivery, to avoid hauling non-qualifiers).
- O. Bull Soundness** – The 2011-12 evaluation requires that all bulls shall be structurally sound at delivery for entry into the evaluation program (check prior to delivery). Additionally, bulls shall be screened for soundness during the modified breeding soundness examinations (at the end of the evaluation period) and at the breeding soundness examinations (~ 30 days prior to sale). Bulls that are determined unsound by five (5) or more members of the Test Committee shall be disqualified from the evaluation program.
- P. Bull Scrotal Circumference** – The 2011-12 evaluation requires each bull to measure a minimum scrotal circumference of thirty-two (32) centimeters at the modified breeding soundness examination (at the end of the evaluation period) to qualify for the development period and sale. No minimum scrotal circumference is required at delivery. However, checking each bull just prior to delivery for a scrotal circumference minimum of twenty-seven (27) centimeters and two (2) well developed, descended testicles is recommended.
- Q. Bull Health** – The 2011-12 evaluation requires that a health management, treatment and vaccination protocol is followed for all bull consignments. The Wiregrass BCIA Bull Evaluation Vaccination & Treatment Form shall be used to record and document the administration of vaccines, de-wormer, and grub treatment and shall be submitted to the Test Superintendent at delivery of bull(s). The following health protocol components are required for each bull:
1. Follow Beef Quality Assurance (BQA) guidelines to give all injections forward of the front shoulder, into the neck region and give injections subcutaneous (SQ), instead of intramuscular (IM), when label indicates such option. Do not inject more than 10 cc (ml) per injection site. Follow label directions for handling, storage and use of all biological products and drugs.
  2. Dehorn bull(s), if applicable, by 120 days of age. All dehorning shall be completely healed prior to delivery or bull(s) shall be rejected at delivery.
  3. Wean bull(s) no later than 30 days prior to delivery to the evaluation.
  4. Manage and treat bull(s) to eliminate mange and active pinkeye infections. Bull(s) with signs of infectious and/or contagious disease (including, but not limited to, mange and active pinkeye) shall be rejected at delivery.
  5. Immunize bull(s) against the following diseases, with the last dose given no later than 21 days prior to delivery and record information on the Wiregrass BCIA Bull Evaluation Vaccination & Treatment Form:
    - a. 7 or 8-Way Clostrial (Blackleg) vaccine – 2 doses required, given 2-4 weeks apart per label instructions.
    - b. IBR, PI<sub>3</sub>, BRSV & BVD (type 1 & 2) vaccine – 2 doses required, given 2-4 weeks apart per label instructions (a modified live virus vaccine is preferred).
    - c. Mannheimia Haemolytica (Pasteurella) vaccine – 1 dose required, if labeled as a single dose product. Otherwise, 2 doses required, given 2-4 weeks apart per label instructions.
    - d. Histophilus somni (Haemophilus somnus) vaccine – 2 doses required, given 2-4 weeks apart per label

## WIREGRASS FORAGE BASED BCIA BULL EVALUATION 2011-2012 RULES AND REGULATIONS

instructions.

- e. 5-Way Leptospira (Leptospirosis) vaccine – 2 doses required, given 2-4 weeks apart per label instructions.

*Note: If the vaccinations are completed before May 15, 2011, it is highly recommended that an additional booster of each vaccine is given, no later than 21 days prior to delivery.*

6. Treat bull(s) with an effective anthelmintic (de-wormer) no later than 30 days prior to delivery. Record treatment(s) information on the Wiregrass BCIA Bull Evaluation Vaccination & Treatment Form.
  7. Treat bull(s) with a systemic insecticide for grub control no later than 30 days prior to delivery. Record treatment(s) information on the Wiregrass BCIA Bull Evaluation Vaccination & Treatment Form.
  8. Submit individual tissue sample for each bull nomination(s) to an accredited laboratory for individual analysis (An analysis of pooled samples is not acceptable.) to obtain a report of negative BVD-PI test results for each bull prior to delivery. A report of negative BVD-PI test results for each bull is required and shall be submitted to the Test Superintendent at delivery.
  9. Out of state (Alabama bordering states) bulls shall meet all of the requirements for state entrance as determined by the Alabama State Veterinarian of the Alabama Department of Agriculture and Industries. A veterinarian signed, Certificate of Health, verifying the health and inspection of each bull, including the identification number of each bull, and performed within 30 days of delivery to the evaluation, is required and shall be submitted to the Test Superintendent at delivery.
- R. Bull Disposition** – The 2011-12 evaluation requires that all bulls shall have manageable dispositions. Unruly bulls with bad temperaments will not be tolerated. Bulls shall be rejected or dismissed from the evaluation program for aggressive behavior detrimental to the quality of the evaluation as decided by five (5) or more Test Committee members.
- S. Test Veterinarian** – A local veterinarian shall be selected as Test Veterinarian by the Test Managers. The Test Veterinarian shall perform health inspections and receiving treatments (at delivery), perform modified breeding soundness examinations (at the end of the evaluation period), perform breeding soundness examinations (~ 30 days prior to the sale) and issue health certificates (sale day). In addition, the Test Veterinarian shall be available to the Test Managers for health consultations, examination of bulls and/or treatment of bulls as may be deemed appropriate by the Test Managers.
- T. Data Collection** – Weight gain data shall be collected from bulls during the evaluation with tentative weigh dates scheduled for delivery, start of the evaluation, forty-nine (49) days on test, ninety-eight (98) days on test and end of test (147 days). Ultrasound data shall be collected from bulls as yearlings. Hip height (frame score) and scrotal circumference will be measured intermittent during the evaluation.
- U. Liability** – No expressed, nor assumed liability for bull(s) is accepted by the Wiregrass Forage Based BCIA Bull Evaluation, the Board of Directors, the Test Committee, the Test Veterinarian, Advance Genetic Resource, LLC, the Alabama Beef Cattle Improvement Association, Auburn University, the Alabama Cooperative Extension System, their agents, workers or volunteers for any loss(es) due to death, injury, sickness, theft or any other cause while bull(s) are in the evaluation program. Efforts shall be made by all listed to safeguard the health and well-being of the bulls until they are removed from the evaluation site.
- V. Insurance** – Bulls shall be covered with peril insurance during their residence at the evaluation. This covers the death of a bull due to specific acts of nature (like lightening, tornado, etc. – the full terms of coverage is available from Alabama BCIA). It does not cover death due to bloat, respiratory, broken legs, etc. Consignors wanting the latter coverage should check with their livestock insurance agent.
- W. Sale Eligibility** – Bulls shall meet all of the following eligibility requirements for Test Sale inclusion:
1. Bulls must express adequate growth and performance during the evaluation. A minimum ratio of 80 for the Final Growth Index ( $\frac{1}{2}$  of the average daily gain ratio +  $\frac{1}{2}$  of the weight per day of age ratio, calculated at the conclusion of the evaluation period) is required.
  2. Bulls must measure a minimum scrotal circumference of thirty-two (32) centimeters and pass a modified breeding soundness examination at the conclusion of the evaluation period.
  3. Bulls must pass a complete breeding soundness examination approximately thirty (30) days prior to sale date.

**WIREGRASS FORAGE BASED BCIA BULL EVALUATION  
2011-2012 RULES AND REGULATIONS**

4. Bulls must pass screenings for structural soundness and be free of physical breeding defects performed at the conclusion of the evaluation and approximately thirty (30) days prior to sale date.
  5. Bulls must have Expected Progeny Differences (EPDs) and EPD percentile rankings for birth weight (BW), wean weight (WW), yearling weight (YW) and maternal milk (MM) calculated and made available by their registering national breed association at the conclusion of the evaluation period.
  6. Bulls must retain quality through sale date. Bulls may be removed from the Test Sale due to disposition, performance, quality or structure at any time by a group of five (5) or more Test Committee members.
  7. Bulls that are qualified for the development period and consigned to the Test Sale must have original registration certificates submitted to the Test Superintendent by June 1, 2012.
- X. Sale Consignment** – Qualifying bulls shall be consigned to the Test Sale following the completion of the evaluation period. Sale consignments shall remain together at the evaluation site and complete the development period leading to the sale date of October 27, 2012. If a qualifying bull is not consigned to the Test Sale at the completion of the evaluation period, the bull shall incur a \$100.00 removal fee and shall be removed from the test site by the consignor no later than June 1, 2012.
- Y. Sale Order** – The Test Sale order shall be established by calculating a Bull Power Index (BPI) value for each bull within his breed. The Bull Power Index (BPI) value shall consist of  $\frac{1}{3}$  of the final test ratio for average daily gain (ADG),  $\frac{1}{3}$  of the final test ratio for weight per day of age (WDA) and  $\frac{1}{3}$  of a ratio for an Expected Progeny Differences (EPD's) percentile index (calculated for BW, WW, YW and MM at the conclusion of the evaluation). One bull from each breed, provided the breed has a consignment with a BPI value greater than 100 (100 = average), will sell first in descending order of BPI value. The remaining bulls will sell in descending order of BPI value, regardless of breed.
- Z. Sale Minimum** – Bulls in the Test Sale shall be valued at a minimum price of \$1,200.00 per bull. No auction bid less than \$1,200.00 shall be considered. Bulls not receiving a minimum bid shall be returned to consignor for disposal. Note: Sale costs will be calculated at \$1,200.00 for bulls that do not receive a minimum bid.
- AA. Evaluation Costs** – The 2011-12 evaluation shall charge bulls individually for weight gain, yardage and individual health care treatment. The evaluation shall charge other, group expenditures to an individual bull on a pro rata share basis.
1. Weight gain shall be charged at the rate of \$0.65 per pound of gain. Weight gain is calculated from bull delivery until disposal (death, removal or sale). In cases of death (where weighing is not practical), weight gain shall be calculated using the last measured weight and adding 1.5 pounds of gain per day, afterward.
  2. Yardage fee shall be charged at the rate of \$0.75 per head per day and calculated from bull delivery until disposal (death, removal or sale).
  3. Veterinary and pharmaceutical costs for specific health care of an individual bull shall be charged to that individual. Evaluation treatments and services (like receiving treatments, de-worming, modified breeding soundness examination and complete breeding soundness examinations) shall be charged equally among all participating bulls.
  4. Identification expenses (flap ear tags and electronic tags) shall be charged as applied to each bull.
  5. Insurance premiums shall be charged to each bull for peril insurance coverage.
  6. Ultrasound, carcass data collection costs shall be charged equally among all scanned bulls.
  7. Test Sale costs shall be charged using a percentage of the sale price for Alabama BCIA (4%) and auctioneer (1%) commissions and charged per head for bulls consigned and cataloged for the remaining sale expenses.
- BB. Payment Schedule** - The 2011-12 evaluation shall collect evaluation fees for consignments at the predetermined times listed below. All payments shall be made payable to Alabama BCIA and submitted to the Test Superintendent.
1. The nomination fee (non-refundable) is \$200.00 per bull and shall be submitted along with the nomination form by the deadline of September 1, 2011.
  2. The delivery payment is \$200.00 per bull and shall be submitted at bull delivery, November 16, 2011
  3. The review of accounts (at the end of evaluation period) for negative balances shall generate payment notices from

## **WIREGRASS FORAGE BASED BCIA BULL EVALUATION 2011-2012 RULES AND REGULATIONS**

Alabama BCIA to balance accounts. Payments for negative balance accounts are due no later than June 1, 2012.

4. The sale consignment payment is \$200.00 per bull (qualified bulls, consigned for development and sale). The removal fee for each qualified bull, not consigned for development and sale is \$100.00. Either payment is due by June 1, 2012.
5. The review of accounts (following the sale) to calculate final evaluation program expenses shall be conducted. Sale proceeds shall be deducted as payment for any unpaid evaluation program expenses and account settlement.

### **III. Alabama Beef Cattle Improvement Association**

- A. Supervision – The Alabama BCIA is the primary supervisor of the 2011-12 evaluation and shall be responsible to approve the test site, management, superintendent, directors, advisors, committee and standards of operation.
- B. Communications – The Alabama BCIA and its agents shall communicate evaluation announcements, dates, deadlines, events, reports, rules and regulations to beef producers, membership and the public as shall be appropriate.
- C. Eligibility – The Alabama BCIA shall determine and approve the eligibility of consignors and bulls for the evaluation.
- D. Performance Records – The Alabama BCIA and its agents shall be responsible for the collection, computation and certification of all performance records and shall prepare and distribute progress reports of the evaluation.
- E. Test Sale – The Alabama BCIA and Test Committee shall organize the Test Sale and set policy for advertising, auctioneer, eligibility, financial transactions, management, operation, transfer of ownership, etc.
- F. Finances – The Alabama BCIA shall provide financial services and serve as treasurer of the evaluation. Namely, the Alabama BCIA shall:
  1. Calculate and collect all evaluation fees, deposits, payments and sale costs from consignors.
  2. Calculate, clerk and collect all Test Sale proceeds from bull buyers.
  3. Render payments for materials and services indebted from the operation of the evaluation.
  4. Render payment to Advance Genetic Resource in the amount of \$200.00 per bull nominated, forty-five (45) days prior to delivery of the bulls, to cover the planting costs of winter grazing. The payment shall serve as an advance for weight gain (\$.65 per pound of gain) and yardage (\$0.75 per head per day) expenses which will be incurred from delivery until the conclusion of the evaluation period. Review Advance Genetic Resource account at the conclusion of the evaluation period for further payment.
  5. Render payment to Advance Genetic Resource in the amount of \$200.00 per bull consigned, at the beginning of the development period for eligible bulls consigned to the test sale. The payment shall serve as an advance for weight gain (\$.65 per pound of gain) and yardage (\$0.75 per head per day) expenses which will be incurred during the development period (ending on sale day). Review Advance Genetic Resource account at the conclusion of the development period for further payment.

### **IV. Test Site & Managers**

- A. Nutrition – Advance Genetic Resource shall provide grazing, hay, minerals, supplemental feed and water for the bulls to express adequate growth potential and body development (Goal: 3.0+ pounds of average daily gain) without the gain of excessive body condition during the evaluation period. Advance Genetic Resource shall provide grazing, hay, minerals, supplemental feed and water for the bulls to gain a minimum of 1.0 pound of weight per day during the development period (Goal: 1.5 pounds of average daily gain).
- B. Labor – Advance Genetic Resource shall provide labor for management and care of the bulls in the evaluation program.
- C. Facilities – Advance Genetic Resource shall provide catch pens, cross fencing, fencing, scales and squeeze chute that are suitable for processing, weighing and management requirements for handling bulls in the evaluation program. These shall be located adjacent to the grazing areas.

**WIREGRASS FORAGE BASED BCIA BULL EVALUATION  
2011-2012 RULES AND REGULATIONS**

- D. Health Care – Advance Genetic Resource shall provide health care in accordance with recommendations of the Test Veterinarian (a local practicing veterinarian of their choice). Advance Genetic Resource shall keep complete records of group health treatments for all bulls and the specific health treatments of individual bulls. These records shall provide the basis for calculating charges for health care costs to an individual bull.
- E. Notification – Advance Genetic Resource shall be responsible for notifying the Test Superintendent and the Alabama BCIA office of a death, severe injury, severe sickness or other unusual circumstances that occurs at the Test Site concerning the evaluation program.
- F. Bull Removal – Authorization to remove a bull from the evaluation site at any time following his acceptance at delivery must be approved by Advance Genetic Resource and the Alabama BCIA. Advance Genetic Resource shall deliver all deceased bulls to the Julian Bryant Taylor Diagnostic Laboratory in Elba, Alabama for analysis. Bulls approved for removal (disqualification or withdrawal) shall be released to the consignor or his agent and remain the property of the consignor. Therefore, no bull shall be listed for sale or sold on behalf of Advance Genetic Resource or the Alabama BCIA.

**V. Bull Consignors**

- A. Nomination – Consignors shall complete and submit nomination form and nomination fee (\$200.00 per bull, non-refundable) to the Test Superintendent on or before the deadline of September 1, 2011.
- B. Management – Consignors shall manage nominated bulls to meet all requirements set forth in Section II – General Rules and Regulations, focusing on articles K – R, to meet bull eligibility requirements.
- C. Delivery – Consignors shall deliver their nominated bulls to evaluation site (Advance Genetic Resource farm, south of Elba, Alabama) from 8:00 a.m. until noon (Central time) on Wednesday, November 16, 2011.
- D. Performance Records and Registration – Consignors shall provide the Alabama BCIA with the official weaning records from a national breed association and a copy of the registration certificate for each bull (submit to the Test Superintendent at delivery). Consignors are responsible for submitting the data collected during the evaluation to their respective breed associations in a timely fashion (data is needed to calculate yearling records and may impact EPDs and their availability). Consignors shall surrender to the Alabama BCIA, the original breed registration certificate for each qualifying bull consigned to the evaluation development period and sale (due no later than June 1, 2012).
- E. Health – Consignors shall provide complete health information for nominated bulls on the required Wiregrass BCIA Bull Evaluation Vaccination & Treatment Form (submit to the Test Superintendent at delivery). Consignors shall provide a lab report from an accredited laboratory using an individual tissue sample in an individual analysis which indicates a negative test result for Bovine Viral Diarrhea – persistent infection (BVD-PI) for each bull (submit to the Test Superintendent at delivery). Out of state bull consignors shall provide a veterinarian signed, Certificate of Health (submit to the Test Superintendent at delivery) and shall meet all conditions for entry into Alabama as set forth by the Alabama State Veterinarian. Health requirements are listed in greater detail in Section II – General Rules and Regulations, article Q – Bull Health. The careful review and observation of these health requirements is a priority.
- F. Costs & Payments – Consignors are responsible for paying the Alabama BCIA for all incurred evaluation program costs. Consignors shall make all payments of evaluation charges payable to the Alabama BCIA, exclusively. Please refer to Section II – General Rules and Regulations, articles: AA – Evaluation Costs & BB – Payment Schedule, for costs and payment information. Any removal of a bull (death, disqualification or withdrawal) from the test site, after delivery and prior to the test sale, shall result in a financial account review for that bull with financial actions to settle the account balance within thirty (30) days of removal.
- G. Loss Responsibility – Consignors shall accept and assume all and full responsibility for any loss(es) of their bull(s) for any and all reasons other than gross, willful neglect. Bulls shall be insured with peril insurance (see Section II – General Rules and Regulations, article V – Insurance) while on the evaluation site. The cost of this insurance coverage shall be included in the evaluation expenses.



# Wiregrass Forage Based BCIA Bull Evaluation 2011 – 2012 Nomination Form



**Owner (Consignor):** \_\_\_\_\_

**Farm Name:** \_\_\_\_\_

**Alabama BCIA Herd Code #:** \_\_\_\_\_ (Required)

**Address:** \_\_\_\_\_

**City, State / Zip Code:** \_\_\_\_\_

**Contact Person:** \_\_\_\_\_

**Telephone: (Day)** \_\_\_\_\_ **(Night)** \_\_\_\_\_

**NOMINATION DEADLINE:** September 1, 2011

**NOMINATION FEES:** \$ 200.00 / Bull (\*non-refundable)

**FEES PAYABLE TO:** Alabama BCIA

**AMOUNT ENCLOSED:** \$

**SUBMIT FORM & FEES TO:** Rickey G. Hudson  
Wiregrass Bull Evaluation  
P. O. Box 217  
Headland, AL 36345-0217

Please print (legible) or type, and provide the complete information below on each bull nominee.

Farm Ear Tag#	Tattoo (LE) - Brand (left)	Tattoo (RE) - Brand (right)	Breed Name	Breed %	Registration Number	Birth Date (Mo-Day-Yr)	Birth Weight	Single - Twin	Coat Color	Polled, Horned or Scurs	Sire's Registration #	Dam's Registration #	Creep, None, or ET

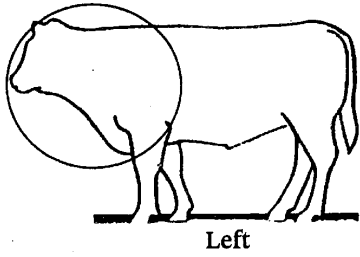
**Notes:** Nomination fees are **\*non-refundable**. However, bull substitutions for hardship situations are allowed.

**AT DELIVERY** – The following items for each bull must be submitted: **1)** An **official** birth – weaning **data report** from the registering national breed association, **2)** a **copy** of the **registration certificate**, **3)** a **negative results, BVD-PI test report** from an accredited lab, **4)** a **completed** Wiregrass BCIA Bull Evaluation **Vaccination & Treatment Form**, **5)** **Out of state bulls** (FL, GA, MS, & TN) must have a veterinarian signed, **Health Certificate** issued within past 30 days, and **6)** **Evaluation fees** at **\$200.00 / bull**.

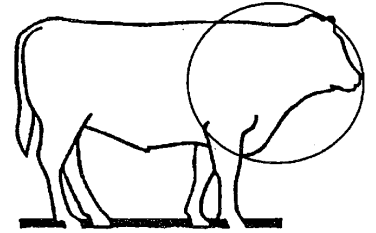




# Wiregrass BCIA Bull Evaluation Vaccination & Treatment Form



Left



Right

Name: \_\_\_\_\_  
(Owner/Manager)

Address: \_\_\_\_\_

City: \_\_\_\_\_

State: \_\_\_\_\_ Zip: \_\_\_\_\_

Phone: \_\_\_\_\_ best time: \_\_\_\_\_

**REQUIRED VACCINATIONS:** 2 doses of the vaccines listed below, given 2-4 weeks apart (follow label directions), with last dose given no later than 3 weeks prior to test delivery is required. If completed before May 15<sup>th</sup>, a second booster (3<sup>rd</sup> dose) is suggested.

Date	Treatment	Product	Lot #	Company	Dose	Route of Admin.	Booster Date	Processor Initials
1.	<b>Clostrial vaccine (7 or 8-Way)</b> <i>(Blackleg)</i>							
2.	<b>IBR / PI<sub>3</sub> / BRSV / BVD (Type 1 &amp; 2)</b> <i>(MLV is preferred)</i>							
3.	<b>Mannheima Haemolytica</b> <i>(Pasteurella)</i> <i>(bacterin &amp; leukotoid)</i>						*If Needed, Read Label.	
4.	<b>Histophilus somni</b> <i>(Haemophilus somnus)</i>							
5.	<b>Leptospira vaccine (5-Way)</b> <i>(Leptospirosis)</i>							
6.	<b>Dewormer Treatment</b> <i>(anthelmintic)</i>							
7.	<b>Grub Treatment</b> <i>(systemic insecticide)</i>							

I hereby certify that all the above vaccinations and treatments were completed as listed for the bull(s) listed below. I also certify that to the best of my judgment, these bulls are free from infectious and contagious diseases (including, but not limited to mange and active pinkeye). *I will carefully examine these bulls prior to delivery, as I understand that bulls of questionable health will be rejected.*

Owner/Manager Signature: \_\_\_\_\_ Date: \_\_\_\_\_

The submission of an individual tissue sample for Bovine Viral Diarrhea Persistent Infection (BVD-PI) testing to an accredited lab for individual analysis is a requirement for each bull. Attach the lab report(s) confirming negative BVD-PI test results for each listed bull.

Out of state bulls must be accompanied by a veterinarian signed Certificate of Health that meets all provisions determined appropriate for state entry by the Alabama State Veterinarian of the Alabama Department of Agriculture & Industries. Attach certificate of health.

Registration #	Tattoo/Brand	Ear Tag #

Registration #	Tattoo/Brand	Ear Tag #





# Wiregrass Forage Based BCIA Bull Evaluation

## 2011 – 2012 Minimum Delivery Weights



**Delivery Date: November 16, 2011 (8:00 a.m. – Noon, Central Time)**

Bull Birth Date	Bull Age @ Delivery	2.0 WDA @ Delivery	Minimum Wt. @ Delivery	Birth Date	Bull Age @ Delivery	2.0 WDA @ Delivery	Minimum Wt. @ Delivery	Birth Date	Bull Age @ Delivery	2.0 WDA @ Delivery	Minimum Wt. @ Delivery
Oct. 15, 2010	397 days	794 lbs.	754 lbs.	Nov. 21, 2010	360 days	720 lbs.	684 lbs.	Dec. 28, 2010	323 days	646 lbs.	614 lbs.
Oct. 16, 2010	396 days	792 lbs.	752 lbs.	Nov. 22, 2010	359 days	718 lbs.	682 lbs.	Dec. 29, 2010	322 days	644 lbs.	612 lbs.
Oct. 17, 2010	395 days	790 lbs.	751 lbs.	Nov. 23, 2010	358 days	716 lbs.	680 lbs.	Dec. 30, 2010	321 days	642 lbs.	610 lbs.
Oct. 18, 2010	394 days	788 lbs.	749 lbs.	Nov. 24, 2010	357 days	714 lbs.	678 lbs.	Dec. 31, 2010	320 days	640 lbs.	608 lbs.
Oct. 19, 2010	393 days	786 lbs.	747 lbs.	Nov. 25, 2010	356 days	712 lbs.	676 lbs.	Jan. 01, 2011	319 days	638 lbs.	606 lbs.
Oct. 20, 2010	392 days	784 lbs.	745 lbs.	Nov. 26, 2010	355 days	710 lbs.	675 lbs.	Jan. 02, 2011	318 days	636 lbs.	604 lbs.
Oct. 21, 2010	391 days	782 lbs.	743 lbs.	Nov. 27, 2010	354 days	708 lbs.	673 lbs.	Jan. 03, 2011	317 days	634 lbs.	602 lbs.
Oct. 22, 2010	390 days	780 lbs.	741 lbs.	Nov. 28, 2010	353 days	706 lbs.	671 lbs.	Jan. 04, 2011	316 days	632 lbs.	600 lbs.
Oct. 23, 2010	389 days	778 lbs.	739 lbs.	Nov. 29, 2010	352 days	704 lbs.	669 lbs.	Jan. 05, 2011	315 days	630 lbs.	599 lbs.
Oct. 24, 2010	388 days	776 lbs.	737 lbs.	Nov. 30, 2010	351 days	702 lbs.	667 lbs.	Jan. 06, 2011	314 days	628 lbs.	597 lbs.
Oct. 25, 2010	387 days	774 lbs.	735 lbs.	Dec. 01, 2010	350 days	700 lbs.	665 lbs.	Jan. 07, 2011	313 days	626 lbs.	595 lbs.
Oct. 26, 2010	386 days	772 lbs.	733 lbs.	Dec. 02, 2010	349 days	698 lbs.	663 lbs.	Jan. 08, 2011	312 days	624 lbs.	593 lbs.
Oct. 27, 2010	385 days	770 lbs.	732 lbs.	Dec. 03, 2010	348 days	696 lbs.	661 lbs.	Jan. 09, 2011	311 days	622 lbs.	591 lbs.
Oct. 28, 2010	384 days	768 lbs.	730 lbs.	Dec. 04, 2010	347 days	694 lbs.	659 lbs.	Jan. 10, 2011	310 days	620 lbs.	589 lbs.
Oct. 29, 2010	383 days	766 lbs.	728 lbs.	Dec. 05, 2010	346 days	692 lbs.	657 lbs.	Jan. 11, 2011	309 days	618 lbs.	587 lbs.
Oct. 30, 2010	382 days	764 lbs.	726 lbs.	Dec. 06, 2010	345 days	690 lbs.	656 lbs.	Jan. 12, 2011	308 days	616 lbs.	585 lbs.
Oct. 31, 2010	381 days	762 lbs.	724 lbs.	Dec. 07, 2010	344 days	688 lbs.	654 lbs.	Jan. 13, 2011	307 days	614 lbs.	583 lbs.
Nov. 01, 2010	380 days	760 lbs.	722 lbs.	Dec. 08, 2010	343 days	686 lbs.	652 lbs.	Jan. 14, 2011	306 days	612 lbs.	581 lbs.
Nov. 02, 2010	379 days	758 lbs.	720 lbs.	Dec. 09, 2010	342 days	684 lbs.	650 lbs.	Jan. 15, 2011	305 days	610 lbs.	580 lbs.
Nov. 03, 2010	378 days	756 lbs.	718 lbs.	Dec. 10, 2010	341 days	682 lbs.	648 lbs.	Jan. 16, 2011	304 days	608 lbs.	578 lbs.
Nov. 04, 2010	377 days	754 lbs.	716 lbs.	Dec. 11, 2010	340 days	680 lbs.	646 lbs.	Jan. 17, 2011	303 days	606 lbs.	576 lbs.
Nov. 05, 2010	376 days	752 lbs.	714 lbs.	Dec. 12, 2010	339 days	678 lbs.	644 lbs.	Jan. 18, 2011	302 days	604 lbs.	574 lbs.
Nov. 06, 2010	375 days	750 lbs.	713 lbs.	Dec. 13, 2010	338 days	676 lbs.	642 lbs.	Jan. 19, 2011	301 days	602 lbs.	572 lbs.
Nov. 07, 2010	374 days	748 lbs.	711 lbs.	Dec. 14, 2010	337 days	674 lbs.	640 lbs.	Jan. 20, 2011	300 days	600 lbs.	570 lbs.
Nov. 08, 2010	373 days	746 lbs.	709 lbs.	Dec. 15, 2010	336 days	672 lbs.	638 lbs.	Jan. 21, 2011	299 days	598 lbs.	568 lbs.
Nov. 09, 2010	372 days	744 lbs.	707 lbs.	Dec. 16, 2010	335 days	670 lbs.	637 lbs.	Jan. 22, 2011	298 days	596 lbs.	566 lbs.
Nov. 10, 2010	371 days	742 lbs.	705 lbs.	Dec. 17, 2010	334 days	668 lbs.	635 lbs.	Jan. 23, 2011	297 days	594 lbs.	564 lbs.
Nov. 11, 2010	370 days	740 lbs.	703 lbs.	Dec. 18, 2010	333 days	666 lbs.	633 lbs.	Jan. 24, 2011	296 days	592 lbs.	562 lbs.
Nov. 12, 2010	369 days	738 lbs.	701 lbs.	Dec. 19, 2010	332 days	664 lbs.	631 lbs.	Jan. 25, 2011	295 days	590 lbs.	561 lbs.
Nov. 13, 2010	368 days	736 lbs.	699 lbs.	Dec. 20, 2010	331 days	662 lbs.	629 lbs.	Jan. 26, 2011	294 days	588 lbs.	559 lbs.
Nov. 14, 2010	367 days	734 lbs.	697 lbs.	Dec. 21, 2010	330 days	660 lbs.	627 lbs.	Jan. 27, 2011	293 days	586 lbs.	557 lbs.
Nov. 15, 2010	366 days	732 lbs.	695 lbs.	Dec. 22, 2010	329 days	658 lbs.	625 lbs.	Jan. 28, 2011	292 days	584 lbs.	555 lbs.
Nov. 16, 2010	365 days	730 lbs.	694 lbs.	Dec. 23, 2010	328 days	656 lbs.	623 lbs.	Jan. 29, 2011	291 days	582 lbs.	553 lbs.
Nov. 17, 2010	364 days	728 lbs.	692 lbs.	Dec. 24, 2010	327 days	654 lbs.	621 lbs.	Jan. 30, 2011	290 days	580 lbs.	551 lbs.
Nov. 18, 2010	363 days	726 lbs.	690 lbs.	Dec. 25, 2010	326 days	652 lbs.	619 lbs.	Jan. 31, 2011	289 days	578 lbs.	549 lbs.
Nov. 19, 2010	362 days	724 lbs.	688 lbs.	Dec. 26, 2010	325 days	650 lbs.	618 lbs.				
Nov. 20, 2010	361 days	722 lbs.	686 lbs.	Dec. 27, 2010	324 days	648 lbs.	616 lbs.				

**NOTE:** The **Minimum Wt. @ Delivery** column is calculated at 2.0 pounds of weight per day of age, less a 5% shrink.